

## CoastalBulk Shipping Ltd



### M/V ANATOKI

July 2024

#### MAIN PARTICULARS:

Kind of Vessel	Gearless Cargo Vessel (Box Hold)
Registry Port	Nelson, New Zealand
Official Number	MSA 133088
Class	NZ Offshore
Gross Tons	561.00T
Deadweight	868T
Built	February 28, 1992
Builder	Furumoto Tekko Shipbuilding Co., Ltd.
LOA	51.03m
Beam	8.30m
Depth	5.10m
Draft	4.05m
Hatch / Hold Size	27.00m x 6.30m x 5.2m Folding type Steel Hatch covers
Main Engine	550ps x 350rpm 6M26KGHS-01 Matsui Iron Works (Nov.1991)
Supercharger	Exhaust Gas Turbine VTR-200 Niigata
Air Cooler	Surface cooling type 22.14m <sup>2</sup> Tokyo Radiator
Remote Control System	Air type FG-1A Matsui Iron Works
Gear Box	MN630 Niigata Converter
Propeller	4 blades x ALBC3 x Dia 1750mm x Pitch 1000mm Fixed Pitch Mikado
Auxiliary Engine	62ps x 1800rpm 4CHL-TN Yanmar + Turbo RHB6 IHI (Dec. 1991) Deutz 40kva air cooled harbour generator. (Replaced with new engine 2013) 4 ps x 2200rpm NM5H Mitsubishi (for Air Compressor) (Dec.1990)
Generator	50kva x 1800rpm x 225/130v HS-ZK Tokyo Electric (June, 1991) 30kva x 18000rpm (Harbour generator) 1992 40kva x 1800rpm x 225/130v TEW26A driven with M/Eng by Belt Taiyo Electric (Dec.1990)
Air Compressor	30kg/cm <sup>2</sup> x Motor 3.7kw Matsubara 30kg/cm <sup>2</sup> x Diesel 4ps Sabwa
Windlass	2.0/1.0T x 10/20 M/M. x 2 sets, Mooring Winch 2.0/1.0T x 15/30 M/M. x 1set Kosei

#### Nautical Apparatus

Steering Gear TS-020 Tokimec, Magnet Compass T-125, Gyro Compass ES-11A + Auto Pilot Tokimec, Radar 1942 Mark-2 Furuno, JRC JMA 5322-7BB. GPS Plotter Multi-Scale GP-1250 Furuno, Color Video Sounder PCV-561 Furuno, Navtex NX-600 Furuno, VHF Radio JHS-33A JRC, Nany NSatellite, A.I.S System.

#### Accommodation room/ Complement

4 Cabins / 4 crew

#### Ballast

FPT 15.80 No.1 18.20 x 2 No.2 37.90 x 2, No.3 41.20 x 2 Total 210.40m<sup>3</sup>

#### Fresh water (APT)

8.25m<sup>3</sup>

#### Fuel Oil

11.80 x 2 Total 23.60m<sup>3</sup> (100%)

#### Fuel Consumption

80 litre/hour 1.92m<sup>3</sup>/day on 330rpm

#### REMARKS:

- FPT: (Clean)
- Ballast No. 1, 2, 3, all ballast pipe replaced with new one in 2003 when annual dock.
- Ballast No. 1, 2, 3, all ballast tank coated with TAR in last Special Survey in 2004.
- All ballast Air Extractor pipe replaced with Stainless Steel
- On Deck all Scupper replaced with Stainless steel.
- Ballast tanks are in good condition.
- Newly in Survey to NZ Coastal Class, April 2008. Including slipping, shaft/rudder inspection and underwater coatings. Upgraded to NZ offshore in December 08. Further updates carried out in 2012 to increase vessels reserve buoyancy and load line.
- Vessel subject to 5 year survey programme under Maritime New Zealand. This includes a full out of water survey including propeller shaft inspection every 5 years and an intermediate out of water survey half way through this period.
- Propeller shaft renewed in 2021.
- All engines use Low Sulphur Fuel.

#### OWNER:

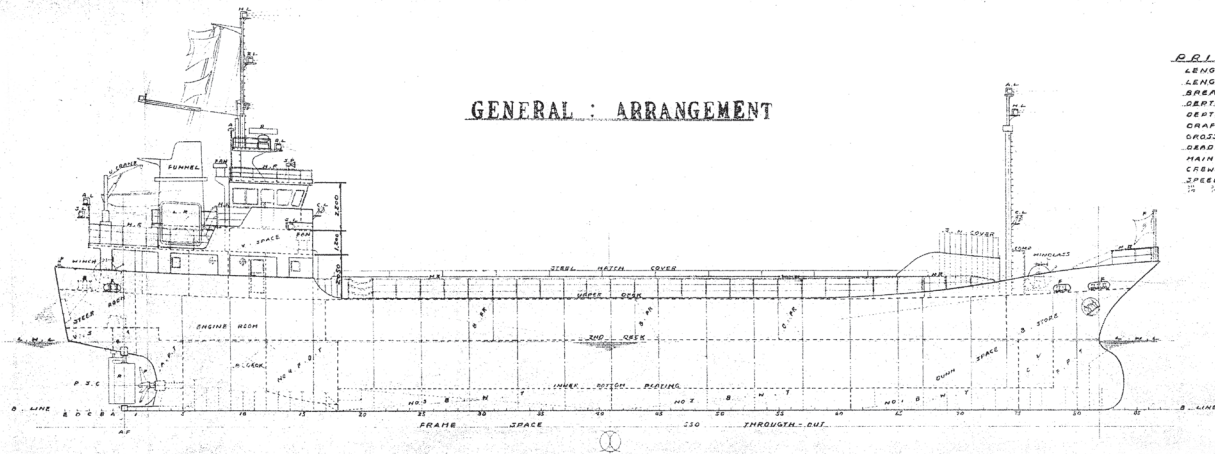
Coastal Bulk Shipping Ltd  
5a Craft Place,  
Middleton, Christchurch 8041  
New Zealand  
Ph: +64 (21) 474 695  
E-mail: craig@coastalbulkshipping.co.nz

本圖之用途及作用也

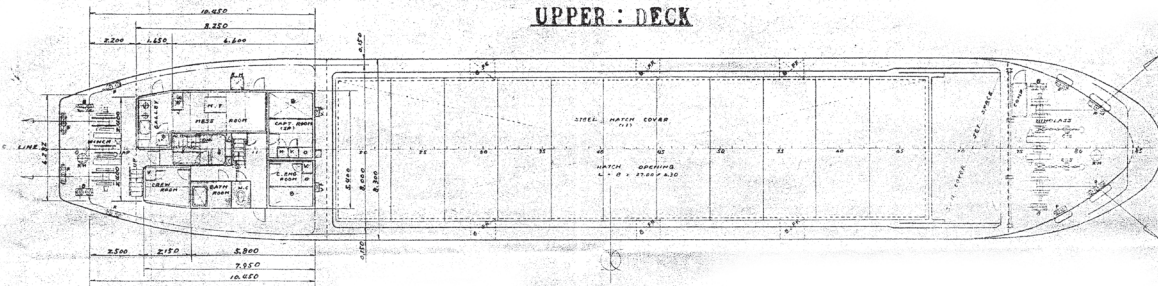
**PRINCIPAL DIMENSIONS**

LENGTH OVER ALL	51' 0 20
LENGTH L.P.P.	41' 0 00
BREADTH MLC	8' 3 00
DEPTH	3' 1 00
DRAUGHT	3' 7 20
GROSS TONNAGE (ART)	171
NET TONNAGE (ART)	145
GRAND WEIGHT TONNAGE (ART)	165
PRIN ENGINE	42
SPEED TRIAL (ART)	11.81

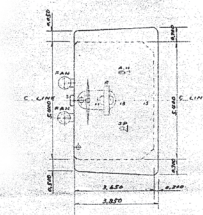
**GENERAL : ARRANGEMENT**



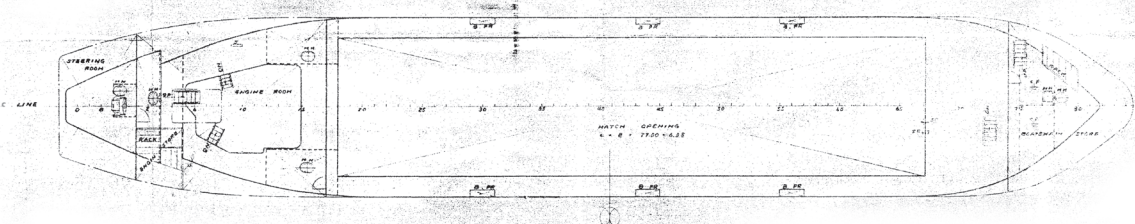
**UPPER : DECK**



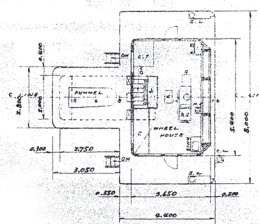
**COMP : DECK**



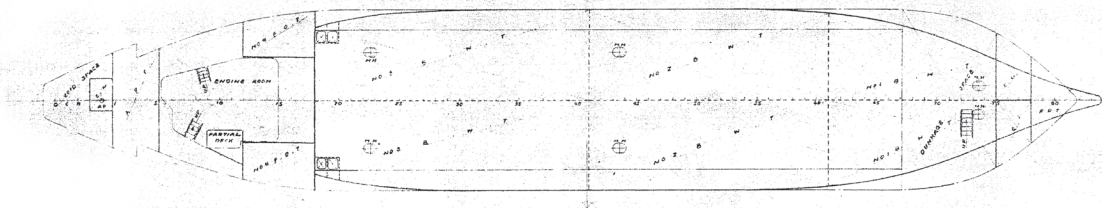
**2ND : DECK**



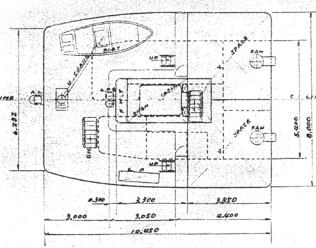
**NAVI : DECK**



**BOTTOM : PLAN**



**BOAT : DECK**



KHON 18

SNO 588

船主濱口春巳 廠  
船名第十八開神 丸

繪上之數明細書添付用  
於於 中華民國 24 年 10 月 14 日

一般型鋼製貨物  
配置圖

尺度 1:100

日本鐵工造船所  
設計部

製圖 王成 34.7.15  
校核 2.4.8  
中華民國 24.7.24

製圖 王成 34.7.15  
校核 2.4.8  
中華民國 24.7.24

製圖 王成 34.7.15  
校核 2.4.8  
中華民國 24.7.24