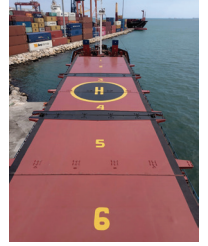


# Coastal Bulk Shipping Ltd



## M/V RANGITATA

July 2024

### MAIN PARTICULARS:

Ex- name	Dorsten, Aninda, Izora & Sipan
Flag	New Zealand
Port of registry	Timaru
Keel laid	2005
Built	2007 / Croatia
Type	General Cargo Ship
Class	DNV
IMO No.	9340740
Call sign	J8B5880
MMSI No.	377289000
P&I	North of England Protecting & Indemnity Association Limited
H+M value	

### GENERAL DIMENSIONS:

GT/NT	1653 / 836
DWT summer sw	2387.02 mts
DWT winter sw	
Draft Summer / Winter	5,299 / m
Draft ballast fore/aft	FWD 2.3 M. / AFT 3.8 M.
Tpc / Fwa	7.69 tns / 107mm
Light Ship	1140.7tns
LOA / LBP	67.10m / 62.7m
Beam	12.4m
Depth moulded	6,100m
Air draft (fm keel to mast)	22.5m
Distance hc/keel	62.7m

### GEARS:

Gearless

### DECK STRENGTH:

Tanktop strength	15 mts / m <sup>2</sup>
Hatchcover strength	1.5 mts / m <sup>2</sup>

### TANK CAPACITIES:

MGO	189.8m <sup>3</sup>
Fresh water	44.9m <sup>3</sup>
Ballast water	667.5m <sup>3</sup>

### AREA AVAILABLE:

Tanktop	382m <sup>2</sup>
Deck	389.76m <sup>2</sup>
Total	771.76m <sup>2</sup>

### HOLD PARTICULARS:

Grain capacity	2570.4m <sup>3</sup>
Holds/hatches	Hydraulic Operated Folding
Hold (LxBxH)	38.40 x 10.12 x 6.7m (narrowing fwd to 5.33m)
Hatch 1 + 2	38.40 x 10.150m
Hatch covers	McGregor folding type
Moveable bulkheads	N/A
Bulkhead weight	N/A
Hold ventilation	2 Electric Ventilation (EU type) 2 Natural Ventilation

### CONTAINER DATA:

Container intake	90 TEU (hold 44 / deck 46)
Reefer plugs	20 reefer plugs

### MACHINERY:

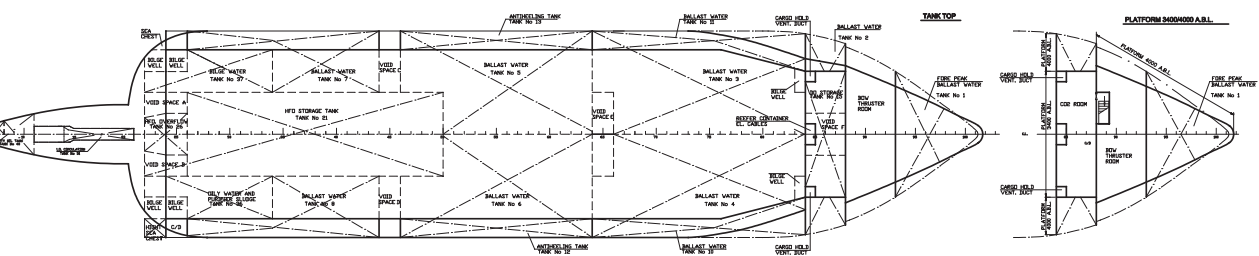
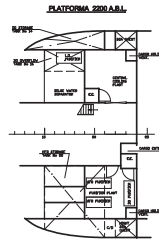
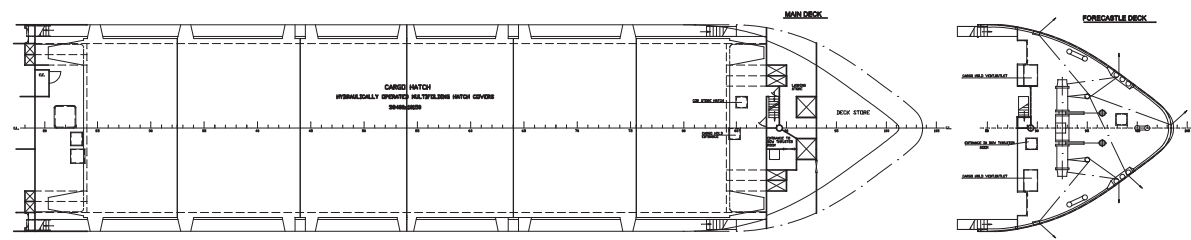
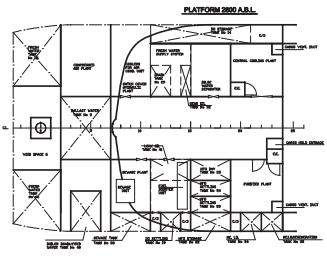
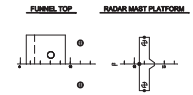
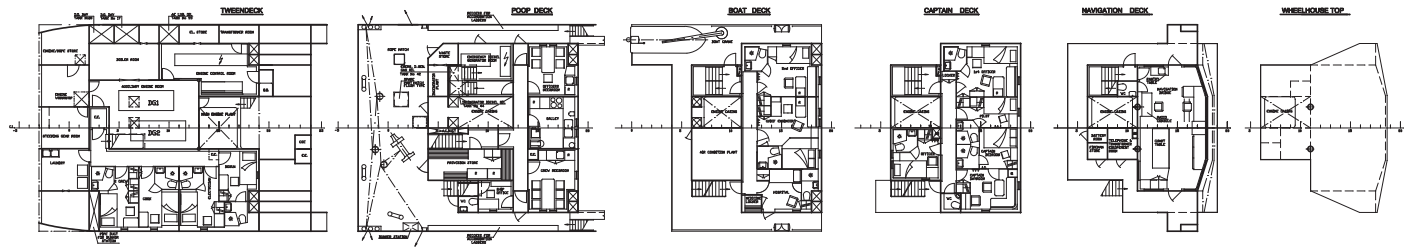
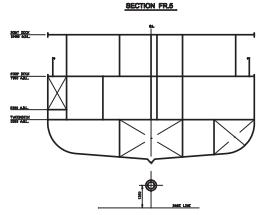
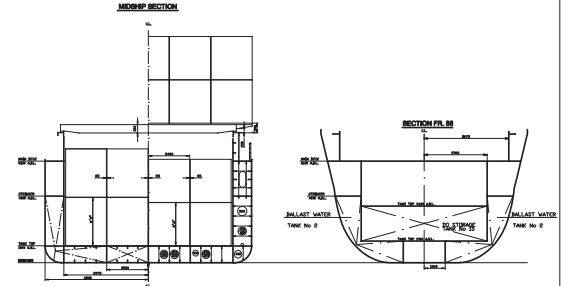
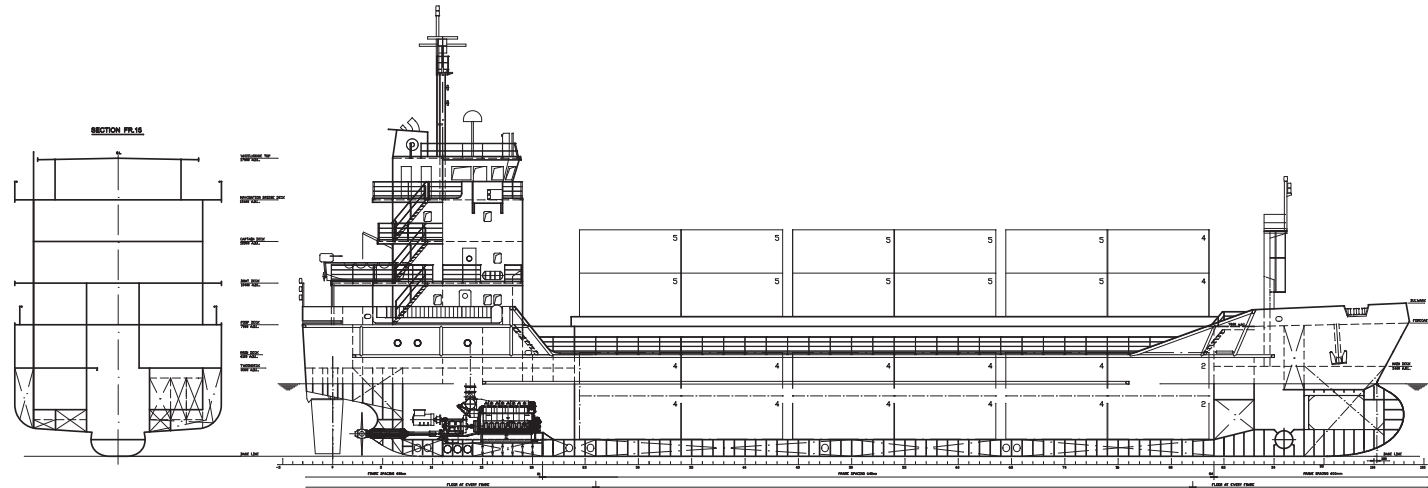
Main engine	MaK 8M20, 1520kW
Auxiliary engines	Caterpillar 301kW x 2
Shaft generator	YES
Bow thruster	150kW
Propeller	CPP Lips Left Handed
Speed/consumption	9 kn @ 3.8T MGO (Diesel).
Port consumption per day	0.4 MT DO

### COMMUNICATION:

Vessel GSM number	NA
Satellite	00 870773285170
Vessel email address	master.rangitata@ipsignature3.net
INM C Number	437700521 / 522

### DISPONENT OWNER:

Coastal Bulk Shipping Ltd  
 5a Craft Place,  
 Middleton, Christchurch 8041  
 New Zealand  
 Ph: +64 (21) 474 695  
 E-mail: craig@coastalbulkshipping.co.nz



LENGTH OVER ALL .....67.0m  
 LENGTH BETWEEN PERPENDICULARS .....62.7m  
 BREADTH MOULDED .....12.4m  
 BREADTH ON FENDERS .....12.6m  
 DEPTH MEASURED TO MAIN DECK .....6.2m  
 DESIGN DRAUGHT .....4.25m  
 SCANTLING DRAUGHT .....4.25m

C	NO. OF STRENGTH PL. IN PL. PART	11.00mm
B	NO. OF STRENGTH PL. IN PL. PART	11.00mm
A	NO. OF STRENGTH PL. IN PL. PART	11.00mm
DECK		
1	11.00mm	11.00mm
2	11.00mm	11.00mm
3	11.00mm	11.00mm
4	11.00mm	11.00mm
5	11.00mm	11.00mm
6	11.00mm	11.00mm
7	11.00mm	11.00mm
8	11.00mm	11.00mm
9	11.00mm	11.00mm
10	11.00mm	11.00mm
11	11.00mm	11.00mm
12	11.00mm	11.00mm
13	11.00mm	11.00mm
14	11.00mm	11.00mm
15	11.00mm	11.00mm
16	11.00mm	11.00mm
17	11.00mm	11.00mm
18	11.00mm	11.00mm
19	11.00mm	11.00mm
20	11.00mm	11.00mm
21	11.00mm	11.00mm
22	11.00mm	11.00mm
23	11.00mm	11.00mm
24	11.00mm	11.00mm
25	11.00mm	11.00mm
26	11.00mm	11.00mm
27	11.00mm	11.00mm
28	11.00mm	11.00mm
29	11.00mm	11.00mm
30	11.00mm	11.00mm
31	11.00mm	11.00mm
32	11.00mm	11.00mm
33	11.00mm	11.00mm
34	11.00mm	11.00mm
35	11.00mm	11.00mm
36	11.00mm	11.00mm
37	11.00mm	11.00mm
38	11.00mm	11.00mm
39	11.00mm	11.00mm
40	11.00mm	11.00mm
41	11.00mm	11.00mm
42	11.00mm	11.00mm
43	11.00mm	11.00mm
44	11.00mm	11.00mm
45	11.00mm	11.00mm
46	11.00mm	11.00mm
47	11.00mm	11.00mm
48	11.00mm	11.00mm
49	11.00mm	11.00mm
50	11.00mm	11.00mm
51	11.00mm	11.00mm
52	11.00mm	11.00mm
53	11.00mm	11.00mm
54	11.00mm	11.00mm
55	11.00mm	11.00mm
56	11.00mm	11.00mm
57	11.00mm	11.00mm
58	11.00mm	11.00mm
59	11.00mm	11.00mm
60	11.00mm	11.00mm
61	11.00mm	11.00mm
62	11.00mm	11.00mm
63	11.00mm	11.00mm
64	11.00mm	11.00mm
65	11.00mm	11.00mm
66	11.00mm	11.00mm
67	11.00mm	11.00mm
68	11.00mm	11.00mm
69	11.00mm	11.00mm
70	11.00mm	11.00mm
71	11.00mm	11.00mm
72	11.00mm	11.00mm
73	11.00mm	11.00mm
74	11.00mm	11.00mm
75	11.00mm	11.00mm
76	11.00mm	11.00mm
77	11.00mm	11.00mm
78	11.00mm	11.00mm
79	11.00mm	11.00mm
80	11.00mm	11.00mm
81	11.00mm	11.00mm
82	11.00mm	11.00mm
83	11.00mm	11.00mm
84	11.00mm	11.00mm
85	11.00mm	11.00mm
86	11.00mm	11.00mm
87	11.00mm	11.00mm
88	11.00mm	11.00mm
89	11.00mm	11.00mm
90	11.00mm	11.00mm
91	11.00mm	11.00mm
92	11.00mm	11.00mm
93	11.00mm	11.00mm
94	11.00mm	11.00mm
95	11.00mm	11.00mm
96	11.00mm	11.00mm
97	11.00mm	11.00mm
98	11.00mm	11.00mm
99	11.00mm	11.00mm
100	11.00mm	11.00mm

1:100 GENERAL ARRANGEMENT